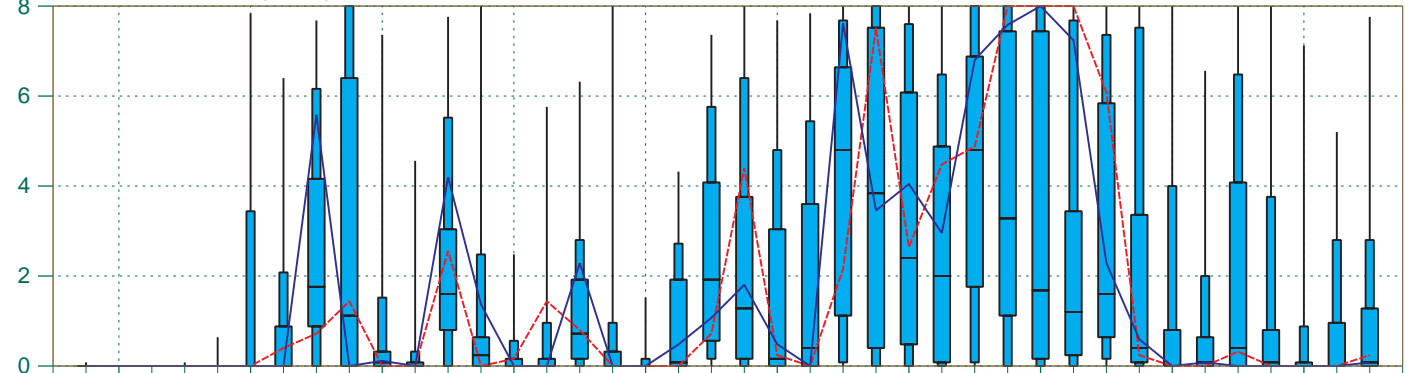
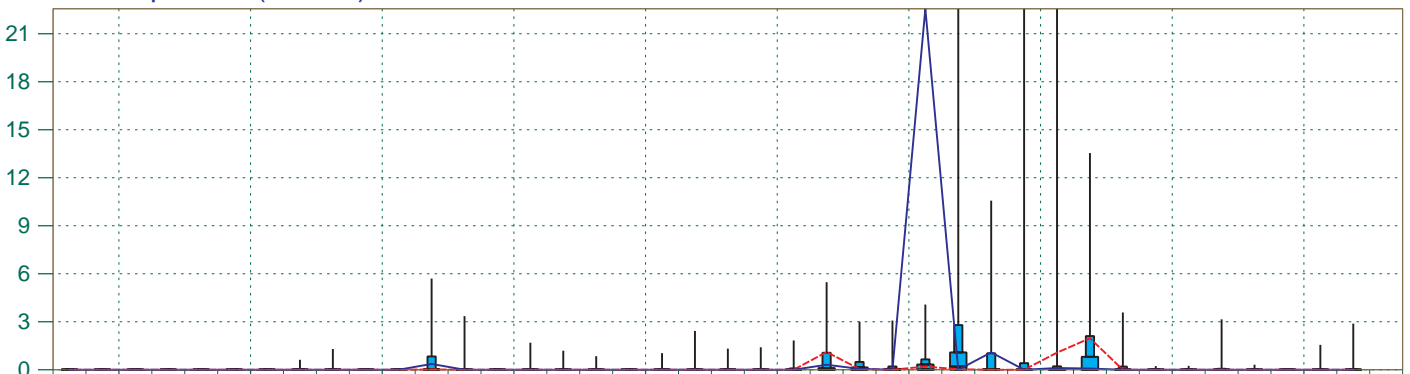


EPS Meteogram
 New Delhi 28.52°N 77.19°E (EPS land point) 218 m
 Deterministic Forecast and EPS Distribution Tuesday 26 May 2015 12 UTC

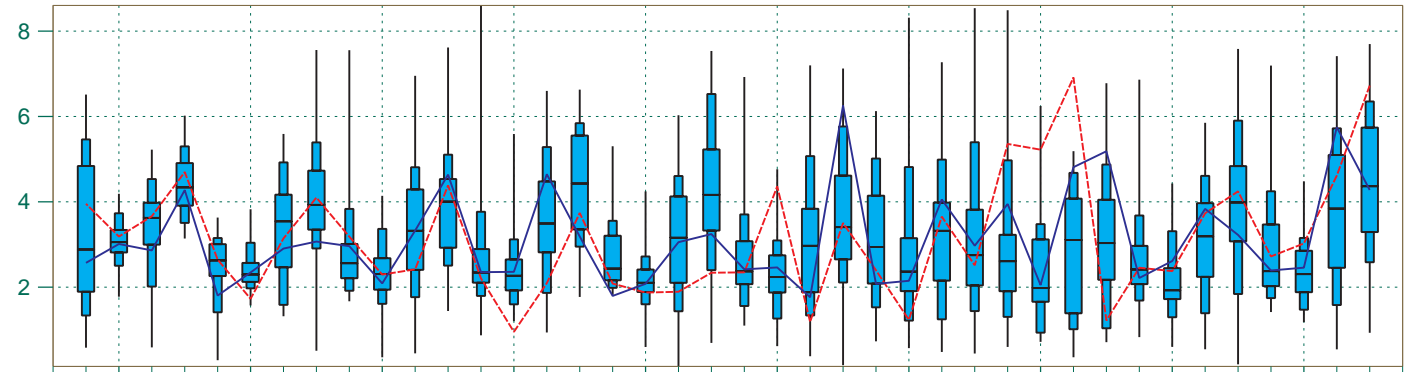
Total Cloud Cover (okta)



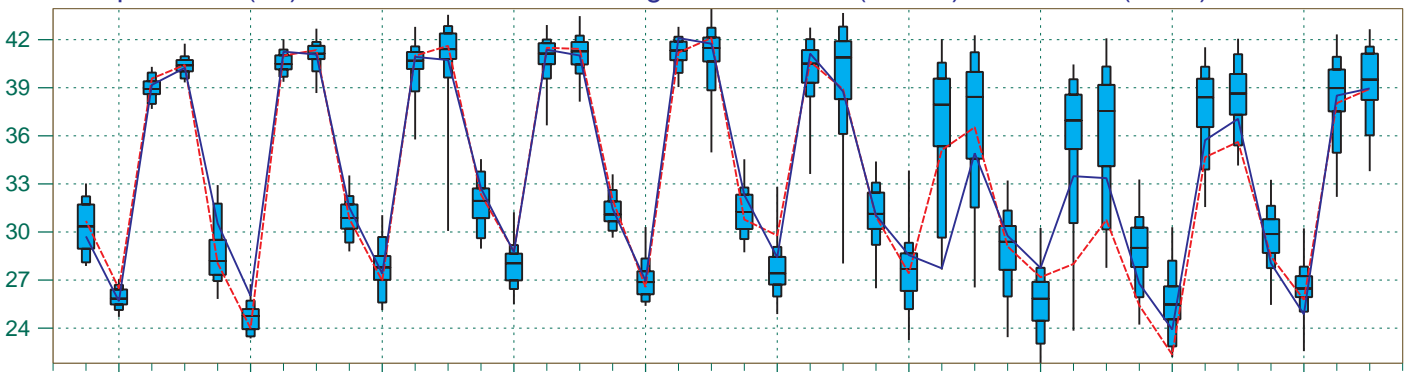
Total Precipitation (mm/6h)



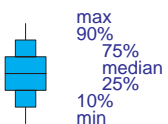
10m Wind Speed (m/s)



2m Temperature (°C) reduced to the station height from 240 m (T1279) and 226 m (T639)



Tue 26 Wed 27 Thu 28 Fri 29 Sat 30 Sun 31 Mon 1 Tue 2 Wed 3 Thu 4 Fri 5
 May 2015 June 2015



EPS Control(31 km) High Resolution Deterministic(16 km)